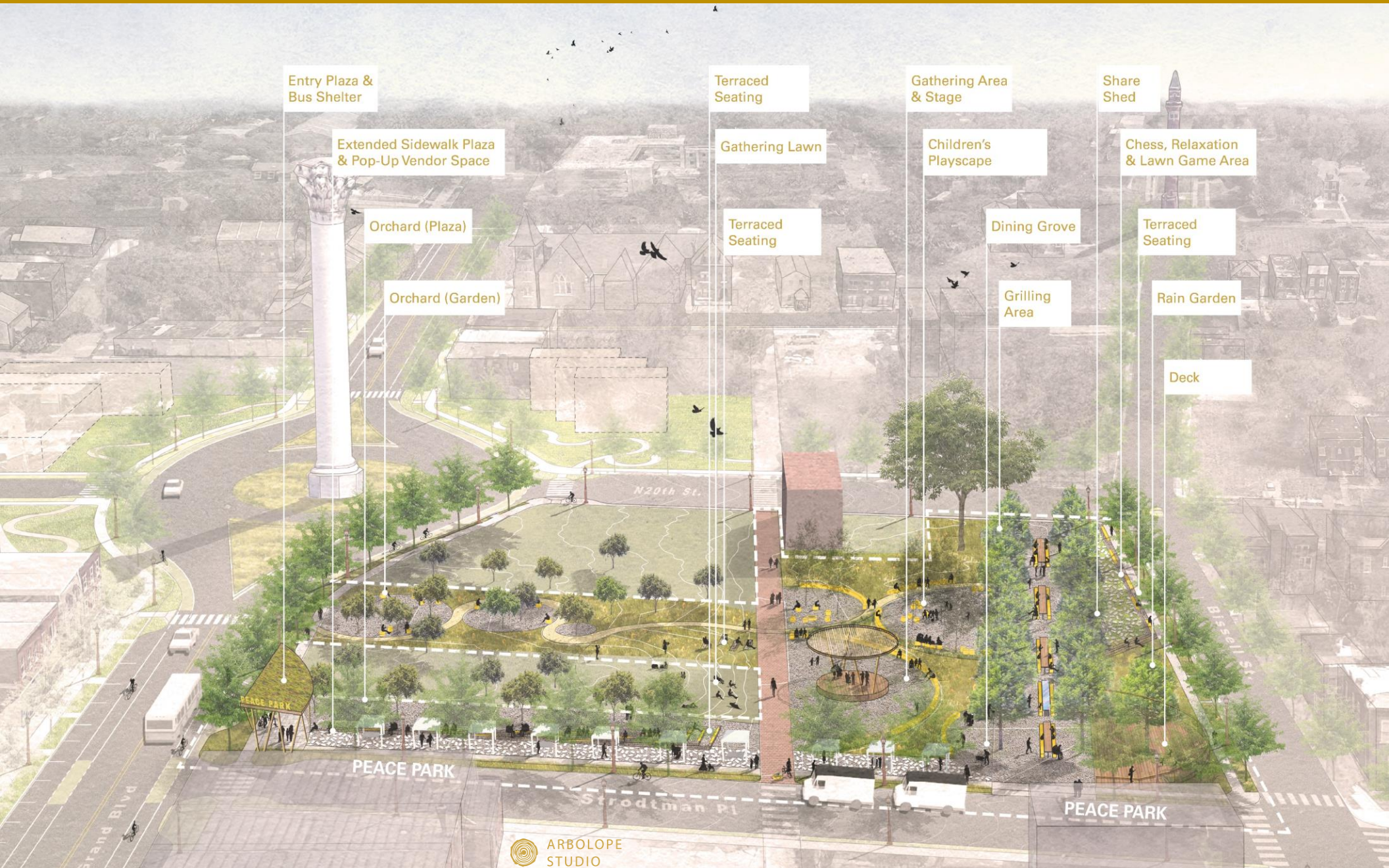


THE FUTURE OF PEACE PARK ...

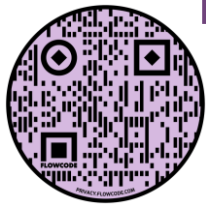


IS IN YOUR HANDS!

OVERVIEW

Peace Park - located next to the Grand Ave Water Tower in the College Hill neighborhood - was founded and named by the late Otis Woodard and has been used as a safe community gathering space for more than 20 years. The Woodard family also used to maintain a "Share Shed" on the property, providing food, clothes, and more to anyone in need.

Today, Peace Park partners are working to develop and implement a redesign of Peace Park - one that will reflect the peaceful intent of the park's creation. With places for gardening, chess competitions, exercise, and grilling, the many areas of Peace Park can also overlap to become sites for concerts, flea markets, family reunions, and protests. Peace Park provides space for the young and the elderly, the able-bodied and the impaired, the extroverts and the introverts: a place for everyone.



**Review the design
with this book
or online at**

www.greencitycoalition.org/peacepark

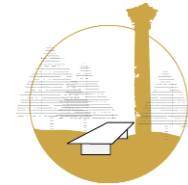
PARK DESIGN GOALS

1

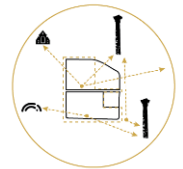
The following goals for Peace Park's redesign have been defined by project partners in response to community inputs.



Create an inclusive
and welcoming
College Hill
community anchor



Honor site's history
and incorporate
beloved site
elements



Create visual and
physical connections
to neighborhood
anchors



Develop a design
that anticipates
future growth



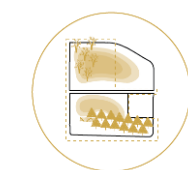
Create a high
impact landscape
with feasible
implementation



Meaningfully
incorporate
community feedback



Create a low
maintenance,
sustainable, multi-
seasonal, multi-
functional, and
resilient landscape



Incorporate existing
site features



Create a bold and clear
landscape design



Leverage project partnerships
and connections to resources
to create a special
neighborhood anchor

CONTENTS



**A Vision for Peace Park:
Design Summary**

**S
U
R
V
E
Y**



Gather & Entertain



Eat & Share



Play & Relax



General Questions



Design Inspiration



Project Partners



Project Progress



Stay Involved!

SUBMITTING YOUR FEEDBACK

**We want submitting your feedback to be as
painless as possible – pick your pathway!**

BY MAIL

SLDC – GCC
1520 Market St., Suite 2000
St. Louis, MO 63103

BY EMAIL

Take pictures of your completed survey pages and email
to **grow@greencitycoalition.org**

BY TEXT

Take pictures of your completed survey pages
and text to **474747**

MASKED DROP-OFF

Drop off your survey at **Urban League – Water Tower
Branch** (prev. Grace Hill Settlement House)

CONTACT-FREE PICK-UP

Give us a call when you're ready and we will send a
masked friend to pick up your completed survey from
you: **(314) 295 - 2352**



A Vision for Peace Park honors the site's legacy as a peaceful, safe, and supportive community space by incorporating its current assets, including:

- **Community Table and Bald Cypress Tree Grove:** additional seating areas and cypress trees are added to create a full dining grove
- **Orchard:** existing orchard trees are pruned, and new and more resilient species of fruiting trees are proposed
- **Existing Trees:** in addition to the orchard and bald cypress tree grove, a collection of river birches and oaks are preserved
- **Deck:** a wooden deck is built around two oaks to create a slightly elevated area for relaxing under the tree canopy
- **Brick Alley:** the alleyway is preserved as a walking path through the center of the park
- **Accessibility:** upgrades the accessibility of the connections to the neighborhood through improved intersections and crosswalks
- **Connections:** visibility is enhanced and highlights the Grand and Bissell Street Water Towers

A Vision for Peace Park increases the opportunity for community enjoyment and use by adding:

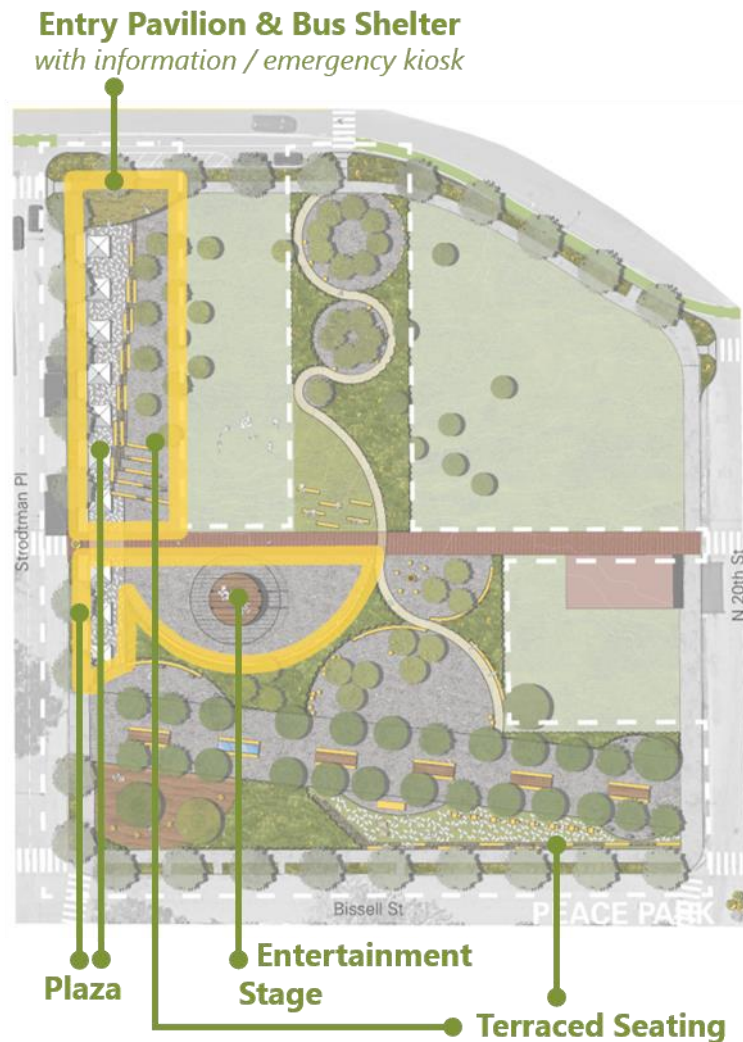
- a new park entrance pavilion with bike racks and bus stop seating
- a multipurpose plaza along Strodtman that can be used for community events, food trucks, art installations, and more
- a large central plaza with an entertainment stage for community events, gatherings, concerts, festivals, and more
- terraced seating built into small hillsides to create new park entrances and seating opportunities
- a meandering pathway through the orchard garden and park
- specialty use areas that include a children's playscape, fire pit gathering space, and chess & lawn game area
- attractive and low maintenance planting beds for native grasses, pollinator habitats, and rain gardens
- spaces for grilling, picnicking, dining, entertaining, playing, and relaxing
- new streetlights, street trees, and sidewalks



DESIGNING FOR FUTURE GROWTH

Peace Park's (re)design starts with only those properties that are already publicly owned, while thoughtfully planning for potential expansion.





The Gather & Entertain design elements are focused on community and event spaces. The **Entry Plaza Pavilion** at Grand and Strodman welcomes visitors with a **Bus Shelter**, bike parking, an informational kiosk, and park signage.

This entry leads to two gathering areas connected by **Terraced Seating** walls: the top terrace is a **Plaza** built around the existing orchard trees, and the bottom terrace is a multipurpose **Plaza** that extends from the sidewalk for pop-up markets, food trucks, events tents and more.

Both spaces extend south to the central gathering area & **Entertainment Stage** in the heart of the park used for presentations, events, concerts, and festivals.

GATHER & ENTERTAIN DESIGN ELEMENTS

Entry Plaza Pavilion & Bus Shelter

Entertainment Pavilion

Emergency / Info Kiosk

Plaza Event Space

Bike Parking

Terraced Seating

OVERALL, HOW DO YOU FEEL ABOUT THE **GATHER & ENTERTAIN** DESIGN ELEMENTS?



Love it!



It's OK.



I have concerns.

HOW DO YOU FEEL ABOUT?

... the covered entranceway with bicycle parking and an emergency / information kiosk?

 Love it!

 It's OK.

 I have concerns.

... the plaza along Strodman designed for event tents, food trucks, pop-up events, etc.?

 Love it!


 It's OK.

 I have concerns.

... the pavilion for concerts with seating built into the surrounding slopes (terraced seating)?

 Love it!

 It's OK.

 I have concerns.

What will you gather for?

- | | |
|--|---|
| <input type="checkbox"/> art fair | <input type="checkbox"/> family picnic |
| <input type="checkbox"/> block party | <input type="checkbox"/> family reunion |
| <input type="checkbox"/> concert | <input type="checkbox"/> flea market |
| <input type="checkbox"/> dance recital | <input type="checkbox"/> food trucks |
| <input type="checkbox"/> faith-based event | <input type="checkbox"/> other: |

Who will you gather with?

- ☐ friends
- ☐ family
- ☐ children
- ☐ my self
- ☐ my class
- ☐ other:

When will you gather?

- ☐ early morning
- ☐ morning
- ☐ midday
- ☐ afternoon
- ☐ early evening
- ☐ late evening
- ☐ weekdays
- ☐ weeknights
- ☐ weekends



The Eat & Share design elements are focused on gathering with friends and family. In the **Dining Grove**, a series of dining tables and nearby **Grilling Areas** provide spaces for both large and small community gatherings.

The **Share Shed** could be rebuilt near the **Dining Grove** to provide a space for sharing community items.

The existing **Orchard** has been expanded to include a more diverse variety of fruiting trees along a pathway that weaves through the park.

EAT & SHARE DESIGN ELEMENTS

Fruiting Trees
in the existing orchard

Dining Tables
eight feet long and expanding upon
the existing 'Giving Table'

Grilling Areas
distributed along the dining
alley

Share Shed
for collecting and distributing
needed community items

OVERALL, HOW DO YOU FEEL ABOUT THE **EAT & SHARE** DESIGN ELEMENTS?



Love it!



It's OK.




I have concerns.

HOW DO YOU FEEL ABOUT?

... keeping and expanding the current orchard (inc. apples, pears, cherries, plums)?

 Love it!


 It's OK.

 I have concerns.

How likely are you to use the community orchard?

 Pretty Likely


 Unsure

 Not Likely

... three separate grilling areas for multi-group uses?

 Love it!


 It's OK.

 I have concerns.

How likely are you to use the grilling areas?

 Pretty Likely


 Unsure

 Not Likely

... an outdoor dining hall with a row large tables, and lined by two rows of existing cypress trees?

 Love it!

 It's OK.

 I have concerns.

How likely are you to use the outdoor dining hall?

 Pretty Likely

 Unsure


 Not Likely

Photo by U Mission, 2008



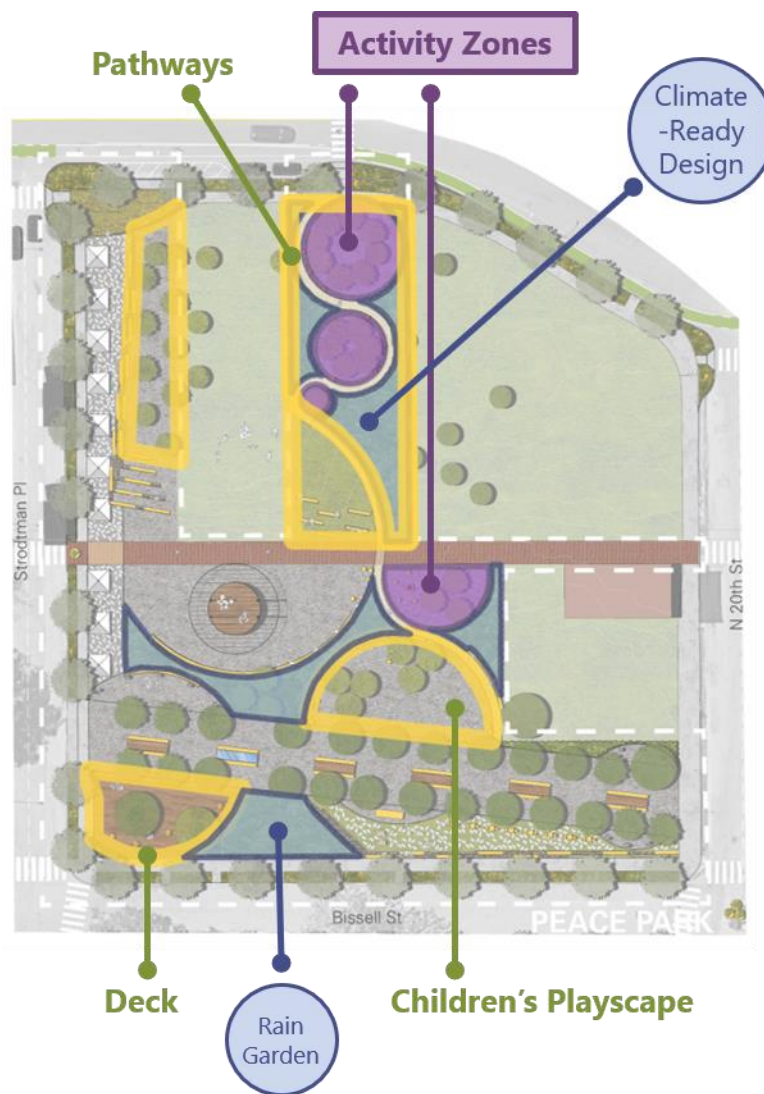
Otis Woodard, the original founder of Peace Park, created a space for sharing food, clothing, and other items with anyone in need. The revised design imagines a new Share Shed, to be placed further inside the park and near the grilling areas and outdoor dining hall.

SHARE SHED

Do you support continuing a Share Shed in Peace Park?

 yes

 no



OVERALL, HOW DO YOU FEEL ABOUT THE **PLAY & RELAX** DESIGN ELEMENTS?

Love it!
 It's OK.
 I have concerns.

The Play & Relax areas include a **Children's Playscape**, a variety of activity zones, and seating opportunities.

For relaxing, a terraced hillside seating area invites visitors to rest along the widened sidewalk path on Strodtman Pl. Park visitors can also rest on benches along the **Pathways** and on the elevated **Deck** under the tree canopy.

In all these spaces they can observe and enjoy natural elements of a **Climate-Ready Design**, including pollinator habitats and a **Rain Garden**.

For more active engagement, a large centralized space north of the Dining Grove could be a large **Children's Playscape**.

The **Activity Zones** are designed to be flexible and accommodate a variety of functions, and are waiting for your input!

PLAY & RELAX DESIGN ELEMENTS

Elevated Deck (~2 ft)
built around existing trees and overlooking a small rain garden

Children's Play Area
artistic playground with natural elements

Walking Paths
that wind through the orchard and link activity zones

Activity Zones
to be designed based on your feedback - see below!

HOW DO YOU FEEL ABOUT?

... a low deck nestled into the trees, with built-in seating, and overlooking a rain garden?

 Love it!

 It's OK.

 I have concerns.

... winding pathways that encourage strolling through the orchard?

 Love it!


 It's OK.

 I have concerns.

... a play area centrally located near the outdoor dining hall and the pavilion?

 Love it!

 It's OK.

 I have concerns.

Select **UP TO FOUR (4)** features that you would like to see in the park:

☐ chess table

☐ exercise equipment

☐ bench swing

☐ swing set

☐ fire pit

☐ sculpture

☐ splash pad

☐ water fountain

☐ lawn games

or propose your own!

* OPTIONAL, ANONYMOUS INFORMATION

11

Help us to prioritize resident interests over non-residents by telling us a little bit about yourself:

I am a _____.

- ☐ resident of College Hill
- ☐ nearby resident
- ☐ friend of College Hill
- ☐ organizational partner
- ☐ other:

My zip code is _____.

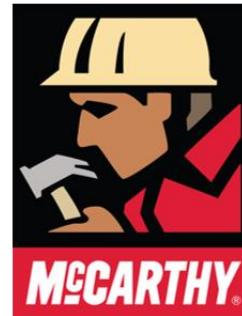
My age is _____.

- ☐ under 18
- ☐ 18 - 24
- ☐ 25 - 39
- ☐ 40 - 60
- ☐ over 60

I am _____ the Peace Park project.

- ☐ very familiar with
- ☐ somewhat familiar with
- ☐ just now hearing about

Use this space to write any final thoughts, suggestions, critiques, or questions:



** College Hill Neighborhood Solutions describes the team of College Hill residents that have invested in developing and promoting plans for Peace Park.

Including, but not limited to, additional support from:
 Custom Foodscaping
 Fred Weber, Inc.
 Harvard University School of Design
 Health Equity Works
 Keeley Companies
 Meghan Kirkwood
 Alderman Brandon Bosley

FUNDING PARTNERS

The Nature Conservancy
 Missouri Department of Conservation
 Washington University in St. Louis // Sam Fox School of Design
 Private Donations

PROPERTY OWNERSHIP & MAINTENANCE

Land Reutilization Authority
 GCC Community Land Trust
 Jubilee Services
 City Forestry Division



Thank You!

STAY INVOLVED IN THE PEACE PARK PROJECT!

VISIT

www.greencitycoalition.org/peacepark

Or give a partner a call!

Jeff Hendred
Urban League of Metropolitan St. Louis
(314) 295 – 2352
jhendred@gracehillsettlement.org

Laura Ginn
St. Louis Development Corporation
(314) 657 – 3778
ginnl@stlouis-mo.gov



Strodtman Pl

E Grand Blvd

N 20th St

N 20th St

Bissell St

PEACE PARK